

# KOMATSU

## PC1250-8 PC1250SP-8

ENGINE POWER  
515 kW / 691 HP @ 1.800 rpm

OPERATING WEIGHT  
Backhoe: 106.500-110.700 kg  
Loading shovel: 110.900 kg

**PC**  
**1250**

HYDRAULIC EXCAVATOR



**PC1250/SP-8**

# WALK-AROUND

## **Productivity features**

- **Heavy lift mode**  
The heavy lift mode increases the lifting force by 10%.
- **Large digging force**  
High operating efficiency with large digging force at rugged work sites.
- **Two-mode setting for the boom**  
Switch selection allows either powerful digging or smooth boom operation.
- **Two powerful swing motors**  
provide excellent swing performance on slopes.
- **Large drawbar pull and steering force**  
provide excellent mobility.
- **Swing priority mode**  
The swing priority mode improves efficiency for loading dump trucks.
- **Shockless boom**  
Switch selection reduces chassis vibration after sudden stops.

## **Excellent reliability and durability**

- **Strengthened quarry bucket**  
provides outstanding wear resistance (option).
- **Kmax bucket teeth**  
offer superior penetration and long-term sharpness (option).
- **Fuel pre-filter with water separator**  
equipped as standard.
- **Face seals**  
with excellent sealing performance are used for the hydraulic hoses.
- **Protected hydraulic circuit**  
The cool-running hydraulic system is protected with the most extensive filtration system available, including a high pressure in-line filter for each main pump.

## **Easy maintenance**

- Reverse rotation function of fan allows easier cleaning of radiator
- Optimised engine checkpoint locations
- Large handrail, step and catwalk provide easy access to the engine and hydraulic equipment
- Extreme durable anti slip plates for safe access



- **Highly reliable electronic devices**  
Exclusively designed electronic devices are certified by severe testing.
  - Controller
  - Sensors
  - Connectors
  - Heat-resistant wiring
- **Boom foot hoses**  
are arranged under the boom foot, improving hose life and safety.

**Ecology and economy features**

- Engine meets EU Stage IIIA/EPA Tier 3 emissions regulations
- Electronically controlled EGR system
- Reduced NOx emissions
- Variable speed electronic controlled fan
- Four level Economy mode allows optimum combination of fuel economy and production
- Reduced noise levels

**ENGINE POWER**

515 kW / 691 HP @ 1.800 rpm

**OPERATING WEIGHT**Backhoe:  
106.500-110.700 kgLoading shovel:  
110.900 kg**Large, comfortable cab**

- Low noise and vibration with cab damper mounting
- Automatic climate control system
- Pressurised cab prevents external dust from entering
- OPG top guard (ISO 10262 level 2 )
- OPG front guard (ISO 10262 level 2) (optional)

**Advanced monitor features**

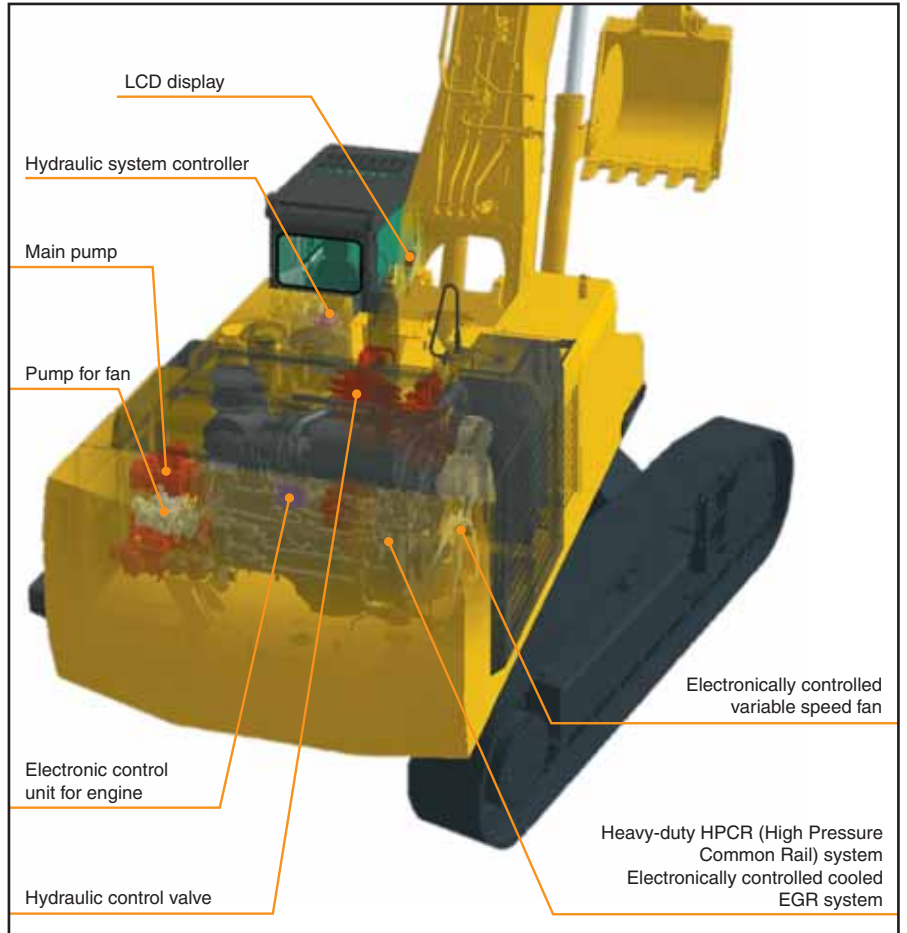
- Machine condition can be checked with Equipment Management and Monitoring System (EMMS)
- Two working modes combine with "Heavy Lift" mode for maximum productivity

# ECOLOGY & ECONOMY FEATURES



## Reliable components

All of the major machine components (such as the engine, hydraulic pump, hydraulic motor and control valves) are designed and manufactured by Komatsu. This guarantees that each component is expressly built for the class and model of machine. This ensures that the engineering, manufacturing standards and testing that go into each component are 'totally Komatsu'.



## Engine

The PC1250-8 gets its exceptional power and work capacity from its Komatsu SAA6D170E-5 engine. The output is 515 kW (691 HP). Using an electronically controlled EGR system, the engine delivers high power with low fuel consumption and meets EU Stage IIIA and EPA Tier III emissions regulations. NOx emission is reduced by 40%.



## Electronically controlled variable speed fan

The fan speed is electronically controlled according to actual operating conditions, ensuring maximum deployment of engine power to working, while minimising noise.

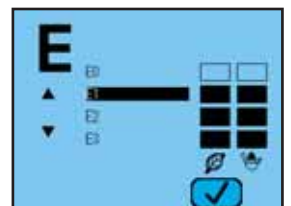


## Reduced noise levels

Reduced noise by adoption of an electronically controlled variable speed fan drive, large hybrid fan, low-noise muffler and cover with glasswool.

## 4-stage Economy mode

allows optimum combination of economy and production.



# PRODUCTIVITY FEATURES

## Large digging force

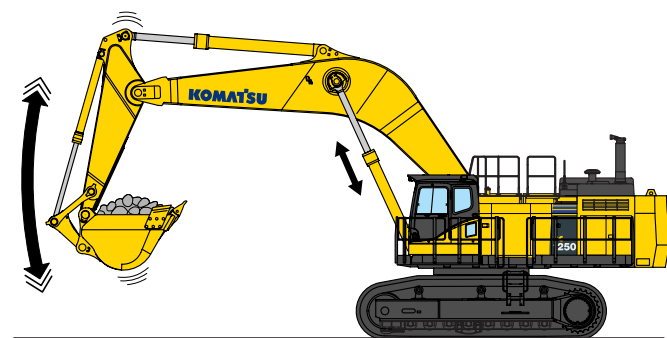
Thanks to the high engine output and an excellent hydraulic system, this machine delivers a powerful digging force.

Bucket digging force: 479 kN (48,8 ton)

Arm crowd force: 412 kN (42,0 ton)

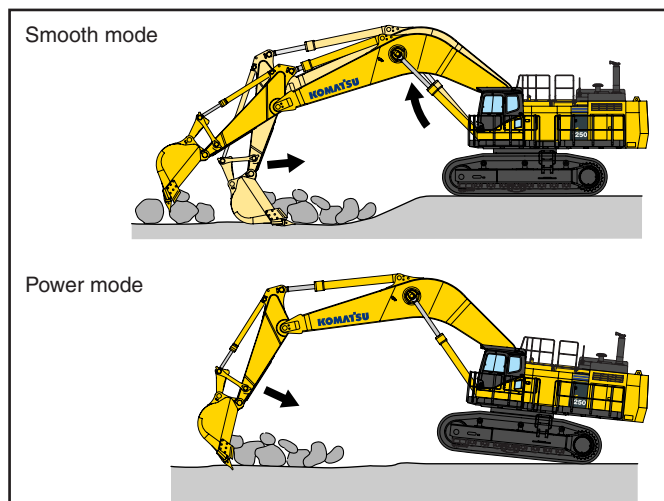
## Shockless boom control

The PC1250-8 features a shockless valve (double-check slow return valve) that automatically reduces the amount of vibration present when operating the boom. Operator fatigue is reduced (which can improve safety and productivity), and spillage caused by vibration is prevented.



## Two settings for the boom

Smooth mode provides easy operation for gathering blasted rock and scraping operations. When maximum digging force is needed, switch to the power mode for more effective excavating.



## Large drawbar pull and steering force

Because the machine has a large drawbar pull and a substantial steering force, it provides excellent mobility, even when working on an incline.

## Power and Economy mode

The PC1250-8 excavator is equipped with two working modes. Each mode is designed to match the engine speed, pump speed, and system pressure to the current application, giving the operator the flexibility to match the equipment performance to the job at hand.

Working mode	Advantage
P Power mode	<ul style="list-style-type: none"> <li>• Maximum production/power</li> <li>• Fast cycle times</li> </ul>
E Economy mode (4-stage: E0, E1, E2, E3)	<ul style="list-style-type: none"> <li>• Good cycle times</li> <li>• Good fuel economy</li> </ul>

## Heavy lift mode

Gives the operator 10% more lifting force on the boom when needed for handling rock or heavy lifting applications.

## Swing priority setting

The swing priority setting allows the operator to use the same easy motion for 180° loading as for 90° loading operations. By altering the oil flow, this setting allows you to select either boom or swing as the priority for increased production.



- Power Mode
- Economy Mode
- Heavy Lift Mode
- Swing Priority Mode

# OPERATOR ENVIRONMENT

PC1250-8's cab interior is spacious and provides a comfortable working environment...

## Large, comfortable cab

### Comfortable cab

The new PC1250-8's cab is offering an exceptionally comfortable operating environment. The large cab enables the seat, with headrest, to be reclined to horizontal.

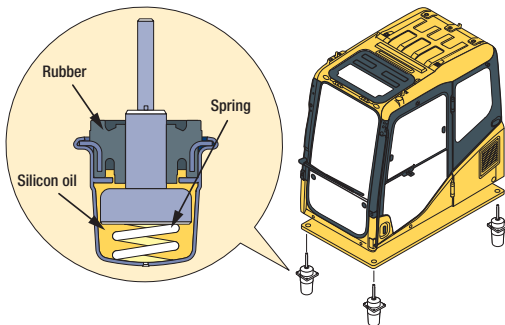
### Low-noise design

Noise levels are substantially reduced; engine noise as well as swing and hydraulics operations noise.

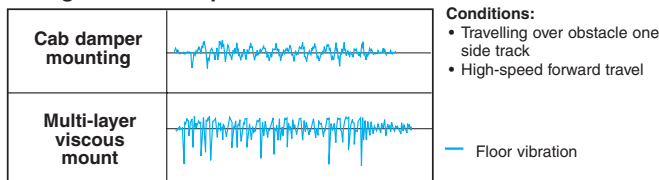
### Cab damper mounting for low vibration levels

PC1250-8 uses a new and improved viscous damping cab mount system that incorporates a longer stroke plus an added spring. The new cab damper mounting, combined with strengthened left and right-side decks, aids the reduction of vibrations to the operator's seat. Vibrations at the floor level have been reduced from 120 dB (VL) to 115 dB (VL).

dB (VL) is an index of vibration level. As it increases, vibration increases and operator comfort is reduced.



### Riding comfort comparison

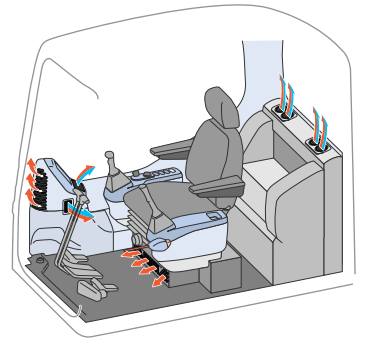


Vertical pitch oscillation on the graph shows the intensity of vibration



### Automatic climate control system

A 6.900 kcal air conditioner is utilised. The bi-level control function keeps the operator's head and feet cool and warm respectively. This improved air flow function keeps the inside of the cab comfortable throughout the year.



### Pressurised cab

The standard-equipped climate control, air filter and a higher internal air pressure resist dust entry into the cab.

### Washable floor

The PC1250-8's floor is easy to keep clean. The gently inclined surface has a flanged floormat and drainage holes to facilitate runoff.





**Multi-position controls**

The multi-position, proportional pressure control levers allow the operator to work in comfort whilst maintaining precise control. A double-slide mechanism allows the seat and controllers to move together, or independently, allowing the operator to position the controllers for maximum productivity and comfort.



Seat sliding range: 340 mm



Cab frame mounted wiper



Bottle holder and magazine rack

**Safety features**



**Step light with timer**

Provides light for about one minute to allow the operator to get off the machine safely.



**Pump/engine room partition**

This prevents hydraulic oil from spraying onto the engine to reduce the risk of fire.

**Thermal and fan guards**

Are placed around high-temperature parts of the engine. The fan belt and pulleys are well protected.



**Anti-slip plates**

Highly durable anti-slip plates maintain superior traction performance for the long term.

**Horn interconnected with warning light (optional)**

gives visual and audible notice of the excavator's operation when activated.

# EASY MAINTENANCE

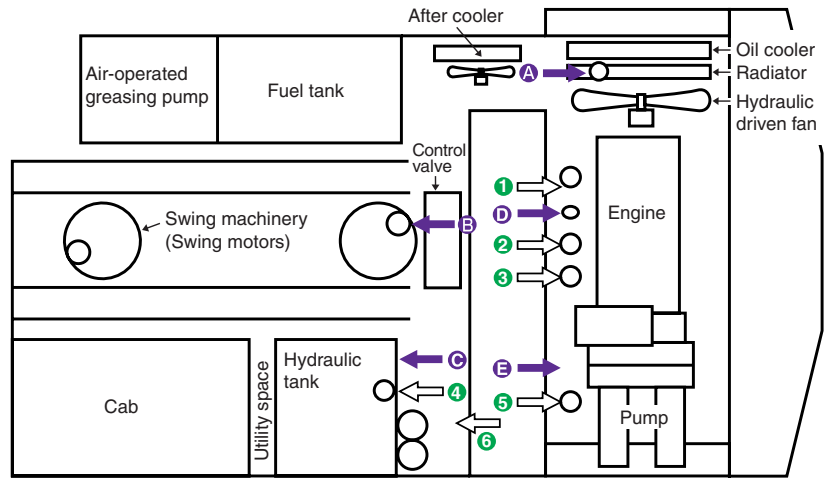
## Easy service access

A wide centre walkway provides easy access to many inspection and maintenance points. In addition, inspection and maintenance points are grouped to facilitate easy engine and hydraulic component checks.



## Large handrail, step and catwalk

Easier, safer operator cab access and maintenance checks.



- A** Coolant
- B** Swing machinery
- C** Hydraulic tank
- D** Engine oil
- E** PTO case
- 1** Corrosion resistor
- 2** Fuel filter
- 3** Engine oil filter
- 4** Hydraulic drain filter
- 5** Pilot filter
- 6** Return filter

## Easier radiator cleaning

Reverse rotation function of fan allows easier cleaning of the radiator.



## Reduced maintenance costs

The hydraulic oil filter replacement has been extended from 500 hours to 1,000 hours. Engine oil and filter replacement has been extended from 250 hours to 500 hours.



## 5-step dust indicator

Informs in 5 steps prior to air cleaner clogging.



## Tool box

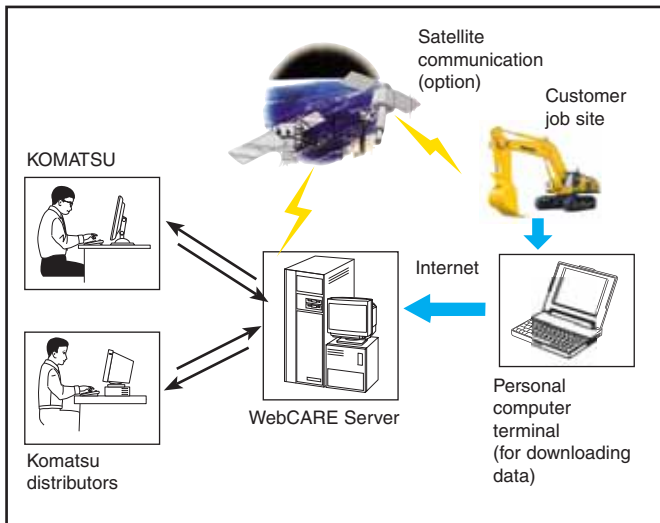
A large tool box provides plenty of space.



## Electric priming pump



Bleeding air from fuel system is easily accomplished with the electric priming pump.



### VHMS (Vehicle Health Monitoring System)

The VHMS controller monitors the health conditions of major components and enables analysis of the machine and its operations. The VHMS controller monitors and stores all data received from the engine and transmission controller and various additional sensors on the major components. This way, it's possible to record the evolution of the machine's health condition. This data can be downloaded via a portable computer or via satellite communication (option). In both cases, Komatsu specialists can analyse this downloaded data and follow up trends in the machine's condition. When using the optional satellite communications, the Komatsu specialist can inform you whenever an abnormal condition occurs. This way, repair and maintenance costs can be optimised, and maximum machine availability can be maintained.

### EMMS (Equipment Management and Monitoring System)

- **Monitor function:** The controller monitors the engine oil level, coolant temperature, battery charge, air-filter restriction, and more. The controller finds any abnormality and displays it on the LCD.
- On the LCD, the maintenance monitor function informs of the need to replace the oil and filters, when the replacement interval is reached.
- The trouble data memory function stores machine abnormalities (error codes) in the monitor for effective troubleshooting.



# RELIABILITY FEATURES

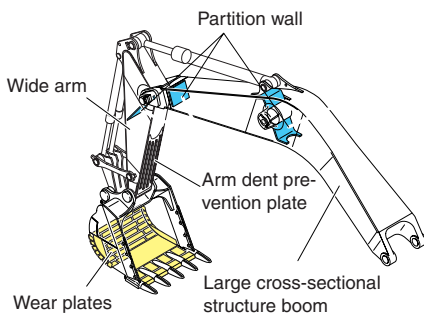
## Boom foot hoses

The boom foot hoses are arranged under the boom foot to reduce hose bend during operation, extending hose life and improving operator safety.



## Strengthened boom and arm

Thanks to the large cross-sectional structure employing a high tensile strength steel with a thick plate, partition wall, etc., the boom and arm provide excellent durability and are highly resistant to bending and twisting.



## Fuel pre-filter (with water separator)

Removes water and contaminants from fuel to enhance the fuel system reliability.



## High pressure In-line filtration

The PC1250-8 has the most extensive filtration system available, providing in-line filters as standard equipment. An in-line filter in the outlet port of each main hydraulic pump reduces failure caused by contamination.



## Metal guard rings

Metal guard rings protect all of the hydraulic cylinders, and improve reliability.

## O-ring face seals

The hydraulic hose seal method has been changed from a conventional taper seal to an O-ring seal. This provides improved sealing performance during vibration.

## Heat-resistant wiring

Heat-resistant wiring is utilised for the engine's electric circuit and other major component circuits.



## Circuit breaker

With the circuit breaker, the machine can be easily restarted after repairs.

## Sturdy undercarriage

The undercarriage is strengthened to provide excellent reliability and durability when working on rocky ground or blasted rock.



Sturdy guards shield the travel motors against damage from rocks.



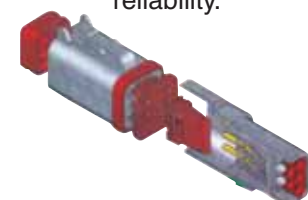
Full length track roller guards (option)

## Tough strengthened frame structure

Strengthened revolving frame, centre frame and crawler frame endure heavy-duty works and exhibit their excellent durability.

## DT-type connectors

seal tight and have higher reliability.



# SERVICEABILITY AND CUSTOMER SUPPORT

## The Komatsu dealer network guarantees you the lowest operating costs

When you purchase Komatsu equipment, you gain access to a broad range of programmes and services that have been designed to help you get the most from your investment. These all support substantial productivity, long and useful equipment lifetime, low operating costs, and a high trade-in or resale value.

- Many of the vital components in the PC1250-8 have been installed and proven totally reliable in other heavy-duty Komatsu earthmoving equipment.
- Komatsu's extensive parts warehouses and logistics system across Europe and around the globe ensure unparalleled parts availability.
- Continuous training programmes for Komatsu service personnel guarantee that your equipment is serviced properly and maintained in top running condition.
- The Komatsu Oil Wear Analysis (KOWA) programme offers sophisticated oil analysis to identify problems to be followed up during preventative, scheduled maintenance.
- KFWP (Komatsu's Flexible Warranty Programme) is available, providing a range of extended warranty options on the machine and its components. These can be chosen, based on individual needs and activities. This programme is designed to help reduce total operating costs.
- A Komatsu Repair & Maintenance Contract is a way to establish a fixed operating cost and ensure optimal machine availability for the duration of the contract.



# SPECIFICATIONS



## ENGINE

Model.....Komatsu SAA6D170E-5  
 Type..... Common rail direct injection, water-cooled, cooled EGR, turbocharged, after-cooled diesel  
 Engine power  
 at rated engine speed ..... 1.800 rpm  
 ISO 14396..... 515 kW / 691 HP  
 ISO 9249 (net engine power)..... 502 kW / 673 HP  
 No. of cylinders ..... 6  
 Bore x stroke ..... 170 x 170 mm  
 Displacement..... 23,15 ltr  
 Fan drive type..... Hydraulic



## HYDRAULIC SYSTEM

Type..... Open-centre load-sensing system  
 Number of selectable working modes ..... 2  
 Main pump..... Variable capacity piston pump  
 Pumps for ..... Boom, arm, bucket, swing, and travel circuits  
 Maximum pump flow:  
 Travel..... 2 x 494 ltr/min  
 Swing ..... 600 ltr/min  
 Sub-pump for control circuit..... Gear pump  
 Hydraulic motors:  
 Travel..... 2 x axial piston motor with parking brake  
 Swing ..... 2 x axial piston motor with swing holding brake  
 Relief valve settings..... Implement circuits  
 Implement circuits ..... 320 kg/cm<sup>2</sup>  
 Travel circuit ..... 350 kg/cm<sup>2</sup>  
 Swing circuit..... 275 kg/cm<sup>2</sup>  
 Pilot circuit..... 30 kg/cm<sup>2</sup>  
 Hydraulic cylinders (no. of cylinders – bore x stroke):  
 Backhoe  
 Boom..... 2 – 225 mm x 2.390 mm  
 Arm ..... 1 – 250 mm x 2.435 mm  
 Bucket PC1250-8..... 2 – 160 mm x 1.825 mm  
 Bucket PC1250SP-8 ..... 2 – 160 mm x 1.950 mm  
 Loading shovel  
 Boom..... 2 – 225 mm x 1.960 mm  
 Arm ..... 2 – 185 mm x 1.765 mm  
 Bucket ..... 2 – 200 mm x 1.700 mm  
 Bottom dump..... 2 – 160 mm x 435 mm



## OPERATING WEIGHT (APPR.)

Operating weight, including boom, arm, bucket, operator, lubricant, coolant, full fuel tank and the standard equipment.  
 PC1250SP-8: + full length roller guard

	BACKHOE				LOADING SHOVEL	
	PC1250-8		PC1250SP-8		PC1250SP-8	
Work equipment	9,1 m boom / 3,4 m arm / 5,0 m <sup>3</sup> bucket (SAE)		7,8 m boom / 3,4 m arm / 6,7 m <sup>3</sup> bucket (SAE)		5,3 m boom / 3,8 m arm / 6,5 m <sup>3</sup> bucket (SAE)	
Double grouser shoes	Operating weight	Ground pressure	Operating weight	Ground pressure	Operating weight	Ground pressure
700 mm	106.500 kg	1,39 kg/cm <sup>2</sup>	110.700 kg	1,44 kg/cm <sup>2</sup>	110.900 kg	1,45 kg/cm <sup>2</sup>
1.000 mm	108.810 kg	0,99 kg/cm <sup>2</sup>	-	-	-	-



## DRIVES AND BRAKES

Steering control ..... 2 levers with pedals  
 Drive method ..... Fully hydrostatic  
 Travel motor..... Axial piston motor, in-shoe design  
 Reduction system..... Planetary double reduction  
 Max. drawbar pull ..... 686 kN/70.000 kgf  
 Gradeability ..... 70%  
 Max. travel speeds  
 Lo / Hi..... 2,1 / 3,2 km/h  
 Service brake..... Hydraulic lock



## UNDERCARRIAGE

Construction ..... H-leg frame  
 with box section track-frames  
 Track assembly  
 Type..... Fully sealed  
 Shoes (each side)..... 48  
 Tension..... Hydraulic  
 Rollers  
 Track rollers (each side) ..... 8  
 Carrier rollers (each side) ..... 3



## COOLANT AND LUBRICANT CAPACITY (REFILLING)

Fuel tank..... 1.360 ltr  
 Radiator ..... 142 ltr  
 Engine oil ..... 86 ltr  
 Swing drive ..... 2 x 24,3 ltr  
 Hydraulic tank..... 670 ltr  
 Final drive (each side) ..... 21 ltr  
 PTO case..... 13,5 ltr



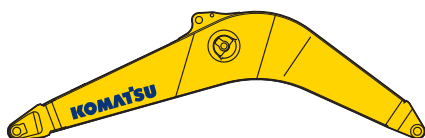
## SWING SYSTEM

Type ..... Hydraulic motor  
 Swing reduction ..... Planetary gear  
 Swing circle lubrication ..... Grease-bathed  
 Swing lock ..... Oil disc brake  
 Swing speed ..... 5,5 rpm

# TRANSPORT DIMENSIONS

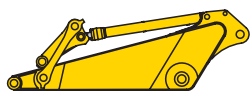
	Work equipment assembly weight
PC1250-8	25,3 ton
PC1250SP-8	27,7 ton

## BOOM



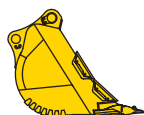
	Weight	Dimension
PC1250-8	11,2 ton	9.475 × 2.894 × 1.474 mm
PC1250SP-8	11,1 ton	8.170 × 3.095 × 1.474 mm

## ARM



	Weight	Dimension
PC1250-8	5,9 ton	4.895 × 1.626 × 890 mm
Heavy Duty version	6,2 ton	4.895 × 1.626 × 890 mm
PC1250SP-8	6,4 ton	4.914 × 1.683 × 890 mm

## BUCKET



	Weight	Dimension
PC1250-8	4,3 ton	2.700 × 2.100 × 2.050 mm
Heavy Duty version	5,5 ton	2.580 × 2.276 × 2.250 mm
PC1250SP-8	6,3 ton	2.527 × 2.420 × 2.520 mm

## ARM CYLINDER



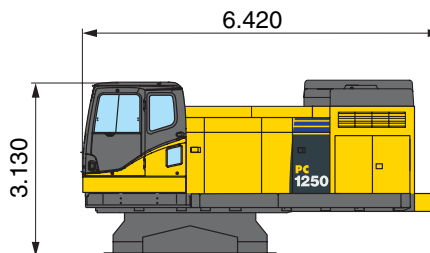
Length	3.950 mm
Weight	1,5 ton

## BOOM CYLINDERS



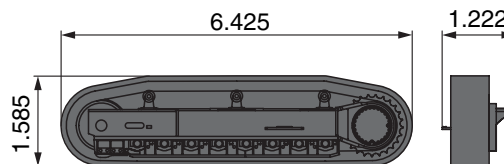
Length	3.810 mm
Weight	2,4 ton (2 × 1,2 ton)

## UPPER STRUCTURE



Width	3.490 mm
Weight	36,4 ton

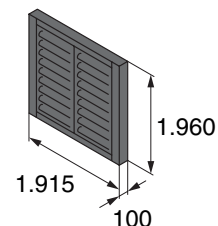
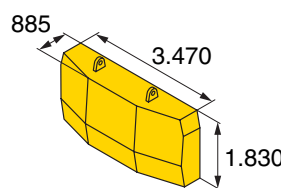
## UNDERCARRIAGE



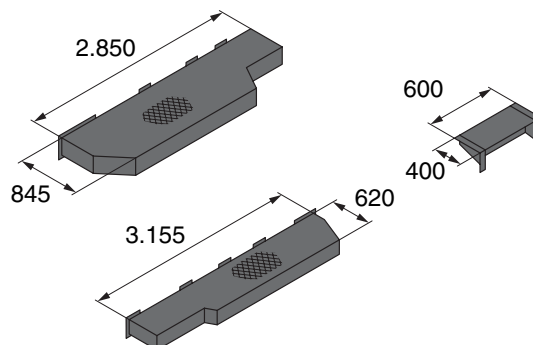
Weight	30 ton (2 × 15 ton)
Weight (with full length track roller guard)	30,9 ton (2 × 15,45 ton)

## OTHERS

Weight	18,4 ton
--------	----------



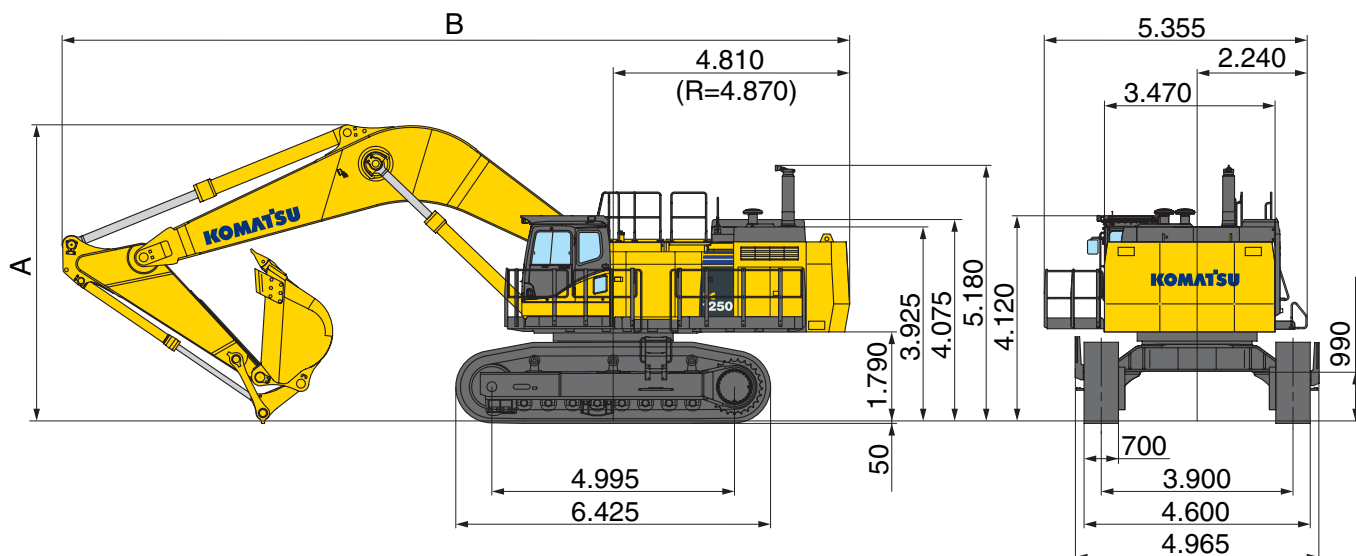
Weight	18,0 ton
--------	----------



Specifications including 9.100 mm boom, 3.400 mm arm, 5,0 m<sup>3</sup> bucket, 700 mm double grouser shoes

# MACHINE DIMENSIONS

## BACKHOE



MACHINE DIMENSIONS		PC1250-8			PC1250SP-8
Boom		9,1 m			7,8 m
Arm		3,4 m	4,5 m	5,7 m	3,4 m
A	Overall height	6.040 mm	6.460 mm	6.990 mm	6.265 mm
B	Overall length	16.020 mm	16.050 mm	15.840 mm	14.790 mm

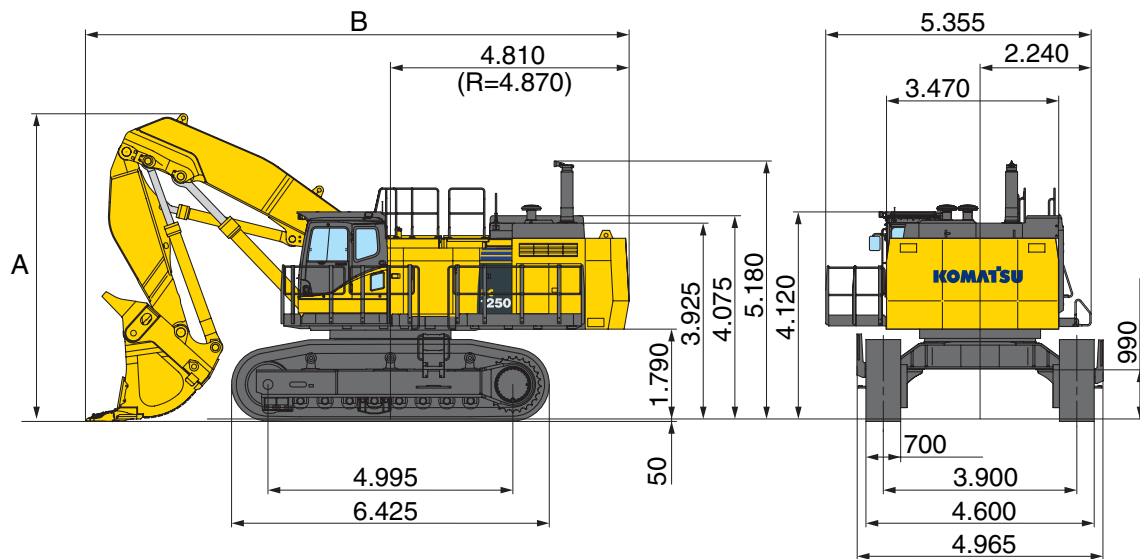
BUCKET AND ARM FORCE		PC1250-8			PC1250SP-8
Boom		9,1 m			7,8 m
Arm		3,4 m	4,5 m	5,7 m	3,4 m
Bucket digging force (SAE)		422 kN/43.000 kgf	422 kN/43.000 kgf	343 kN/35.000 kgf	502 kN/51.200 kgf
Arm crowd force (SAE)		392 kN/40.000 kgf	327 kN/33.300 kgf	281 kN/28.700 kgf	395 kN/40.300 kgf
Bucket digging force (ISO)		479 kN/48.800 kgf	479 kN/48.800 kgf	389 kN/39.700 kgf	570 kN/58.100 kgf
Arm crowd force (ISO)		412 kN/42.000 kgf	337 kN/34.400 kgf	286 kN/29.200 kgf	412 kN/42.000 kgf

BUCKET, ARM AND BOOM COMBINATIONS						
Bucket capacity (SAE)	Bucket width		Bucket weight	Arm		
	Excl. side cutters/shrouds	Incl. side cutters/shrouds		3,4 m	4,5 m	5,7 m
PC1250-8 (9,1 m boom)						
3,4 m <sup>3</sup>	1.500 mm	1.670 mm	3.600 kg	–	○	□
4,0 m <sup>3</sup>	1.710 mm	1.880 mm	3.800 kg	○	□	△
5,0 m <sup>3</sup>	2.050 mm	2.220 mm	4.400 kg	□	△	–
5,2 m <sup>3</sup>	2.050 mm	2.110 mm	5.100 kg	□	△	–
PC1250SP-8 (7,8 m boom)						
6,7 m <sup>3</sup>	2.280 mm	2.340 mm	6.300 kg	□	–	–

Specifications and equipment may vary according to regional availability. Please consult with your distributor for the correct selection of buckets and attachments to suit the application. The recommendations are given as a guide only, based on typical operating conditions.

- Material weight up to 2,1 t/m<sup>3</sup>
- Material weight up to 1,8 t/m<sup>3</sup>
- △ Material weight up to 1,5 t/m<sup>3</sup>
- Not usable

LOADING SHOVEL



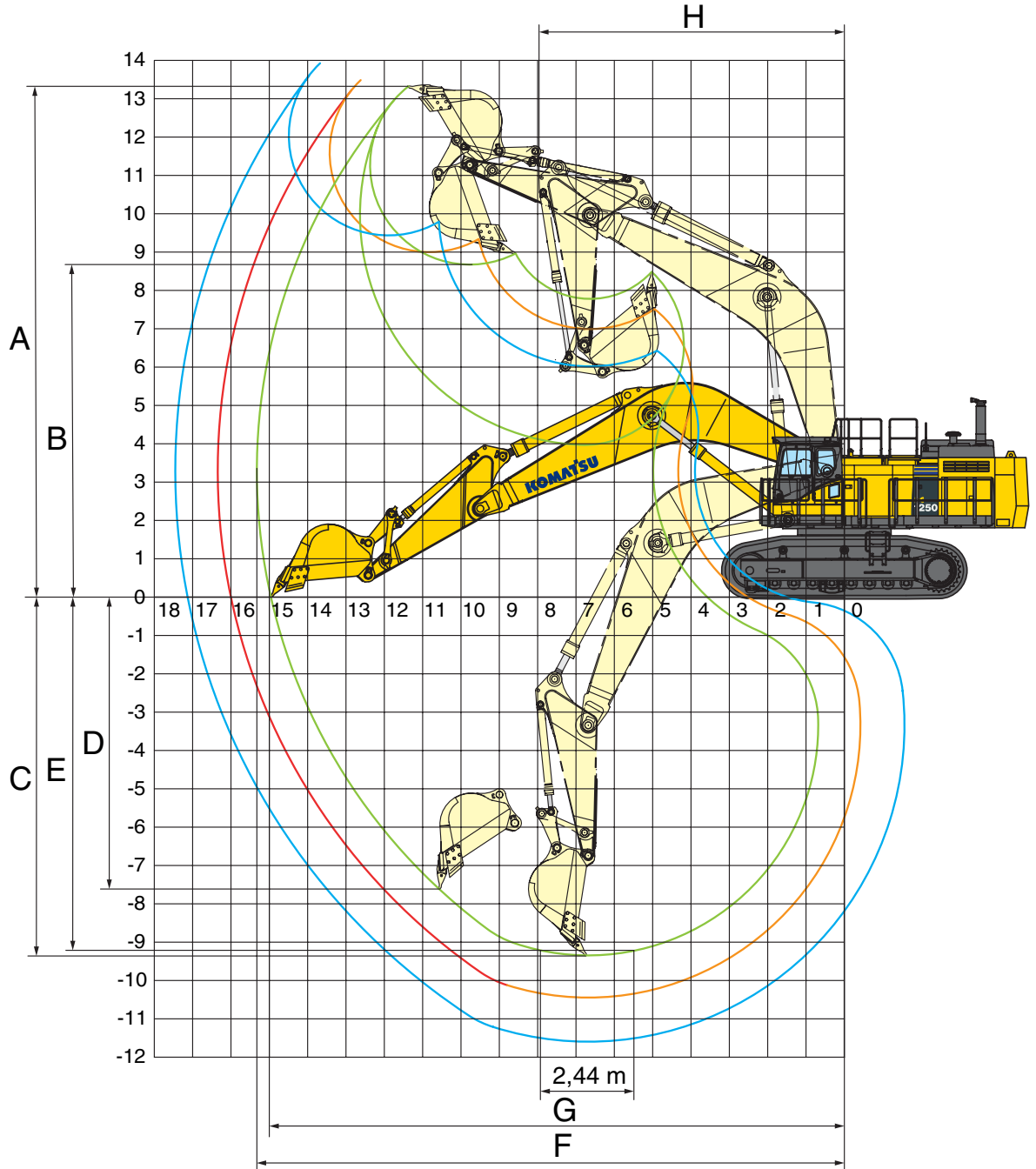
MACHINE DIMENSIONS WITH 6,5 m <sup>3</sup> BOTTOM DUMP BUCKET		
A	Overall height	6.200 mm
B	Overall length	10.940 mm

BUCKET AND ARM FORCE		
	Bucket digging force (ISO)	579 kN/59.000 kgf
	Arm crowd force (ISO)	608 kN/62.000 kgf

BUCKET SELECTION		
	Bucket type	Bottom dump
	Bucket capacity (heaped)	6,5 m <sup>3</sup>
	Bucket width (incl. side shrouds)	2.700 mm
	Bucket weight	9.730 kg
	No. of teeth	6
	Recommended uses	General purpose digging and loading

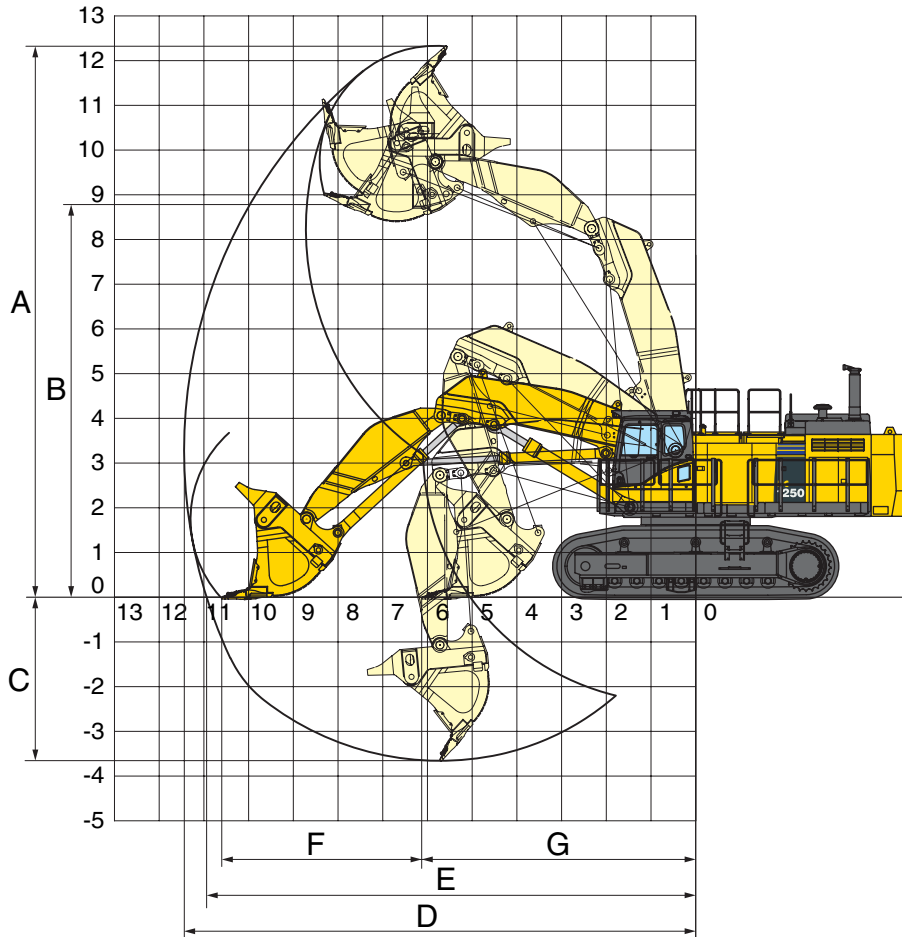
# WORKING RANGE

BACKHOE



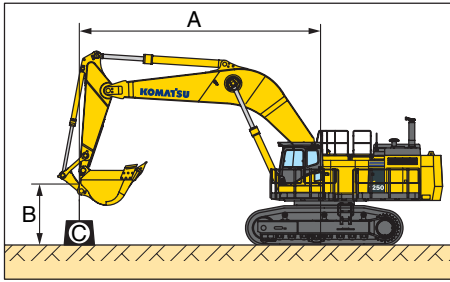
ARM LENGTH		3,4 m	4,5 m	5,7 m	3,4 m
			PC1250-8 (9,1 m boom)		PC1250SP-8 (7,8 m boom)
A	Max. digging height	13.400 mm	13.490 mm	13.910 mm	13.000 mm
B	Max. dumping height	8.680 mm	9.000 mm	9.440 mm	8.450 mm
C	Max. digging depth	9.350 mm	10.440 mm	11.590 mm	7.900 mm
D	Max. vertical wall digging depth	7.610 mm	8.490 mm	9.480 mm	5.025 mm
E	Max. digging depth of cut for 2,44 m level	9.220 mm	10.340 mm	11.500 mm	7.745 mm
F	Max. digging reach	15.350 mm	16.340 mm	17.450 mm	14.070 mm
G	Max. digging reach at ground level	15.000 mm	16.000 mm	17.130 mm	13.670 mm
H	Min. swing radius	7.965 mm	7.990 mm	8.150 mm	6.415 mm

LOADING SHOVEL



ARM LENGTH		3,8 m
		PC1250SP-8 (5,3 m boom / 6,5 m <sup>3</sup> bottom dump bucket)
A	Max. cutting height	12.330 mm
B	Max. dumping height	8.700 mm
C	Max. digging depth	3.650 mm
D	Max. digging reach	11.400 mm
E	Max. digging reach at ground level	10.900 mm
F	Level crowding distance	4.480 mm
G	Min. crowd distance	6.130 mm

# LIFTING CAPACITY



**PC1250-8**

Boom: 9,1 m  
 Arm: 3,4 m  
 Bucket capacity: 5,0 m<sup>3</sup>  
 Bucket weight: 4.400 kg  
 Track shoes: 700 mm

A – Reach from swing centre

B – Bucket hook height

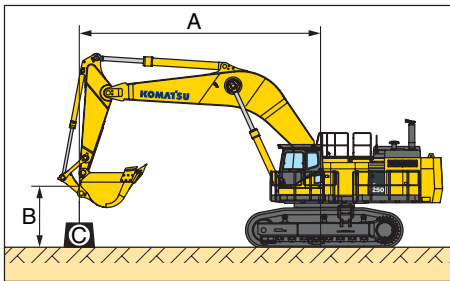
C – Lifting capacity

– Rating over front

– Rating over side

– Rating at maximum reach

Arm length	A			12,2 m		10,7 m		9,1 m		7,6 m		6,1 m		4,6 m		
Heavy Lift: ON 	9,1 m	kg	*15.200	*15.200			*18.000	*18.000								
	6,1 m	kg	*15.950	13.200			*20.050	17.400	*22.950	*22.950	*27.900	*27.900				
	3,0 m	kg	15.650	11.850	16.400	12.500	20.850	16.100	27.000	20.850	*34.950	27.650				
	0,0 m	kg	16.250	12.300			19.950	15.200	24.200	18.200	34.400	26.100				
	-3,0 m	kg	19.950	15.250			20.000	15.250	25.600	19.550	34.600	26.300	*43.850	38.400	*39.250	*39.250
	-6,1 m	kg	*23.500	*23.500							*25.400	*25.400	*32.550	*32.550		
Heavy Lift: OFF 	9,1 m	kg	*15.200	*15.200			*15.500	*15.500								
	6,1 m	kg	*15.850	13.200			*17.300	*17.300	*19.950	*19.950	*24.400	*24.400				
	3,0 m	kg	15.650	11.850	16.400	12.500	*19.800	16.100	*23.900	20.850	*30.550	27.650				
	0,0 m	kg	16.250	12.300			19.950	15.200	24.200	18.200	*32.650	26.100				
	-3,0 m	kg	*19.600	15.250			*19.650	15.250	*24.750	19.550	*30.750	26.300	*38.350	*38.350	*39.250	*39.250
	-6,1 m	kg	*20.150	*20.150							*21.900	*21.900	*28.150	*28.150		



**PC1250-8**

Boom: 9,1 m  
 Arm: 4,5 m  
 Bucket capacity: 4,0 m<sup>3</sup>  
 Bucket weight: 3.800 kg  
 Track shoes: 700 mm

A – Reach from swing centre

B – Bucket hook height

C – Lifting capacity

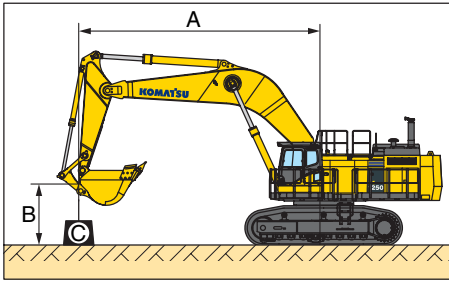
– Rating over front

– Rating over side

– Rating at maximum reach

Arm length	A			12,2 m		10,7 m		9,1 m		7,6 m		6,1 m		4,6 m		
Heavy Lift: ON 	9,1 m	kg	*9.300	*9.300												
	6,1 m	kg	*9.650	*9.650	*16.650	13.700	*18.150	18.000	*20.550	*20.550						
	3,0 m	kg	*10.950	10.200	16.650	12.750	21.200	16.400	*25.600	21.300	*32.350	28.500				
	0,0 m	kg	*13.650	10.400	15.850	11.950	19.900	15.150	24.550	18.500	34.450	26.100	*29.300	*29.300		
	-3,0 m	kg	16.400	12.400			19.550	14.800	25.100	19.050	34.000	25.700	*46.350	37.500	*31.900	*31.900
	-6,1 m	kg	*21.750	18.700					*23.650	20.000	*28.850	25.200	*38.200	*38.200	*48.900	*48.900
Heavy Lift: OFF 	9,1 m	kg	*9.300	*9.300												
	6,1 m	kg	*9.650	*9.650	*14.250	13.700	*15.600	*15.600	*17.850	*17.850						
	3,0 m	kg	*10.950	10.200	*16.050	12.750	*18.500	16.400	*22.250	21.300	*28.250	*28.250				
	0,0 m	kg	*13.650	10.400	15.850	11.950	19.900	15.150	*24.200	18.500	*31.950	26.100	*29.300	*29.300		
	-3,0 m	kg	16.400	12.400			19.550	14.800	25.100	19.050	*31.650	25.700	*40.550	37.500	*31.900	*31.900
	-6,1 m	kg	*18.650	18.650					*20.300	20.000	*24.800	24.800	*33.200	*33.200	*42.600	*42.600

\* Load is limited by hydraulic capacity rather than tipping.  
 Ratings are based on SAE Standard No. J10567.  
 Rated loads do not exceed 87% of hydraulic lift capacity or 75% of tipping load.



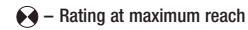
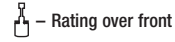
## PC1250-8

Boom: 9,1 m  
 Arm: 5,7 m  
 Bucket capacity: 3,4 m<sup>3</sup>  
 Bucket weight: 3.600 kg  
 Track shoes: 700 mm

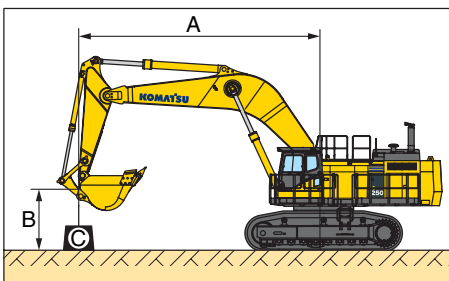
**A** – Reach from swing centre

**B** – Bucket hook height

**C** – Lifting capacity



Arm length	B	A		13,7 m		12,2 m		10,7 m		9,1 m		7,6 m		6,1 m		
Heavy Lift: ON 	9,1 m	kg	*5.900	*5.900												
	6,1 m	kg	*6.050	*6.050	*11.050	10.950	*14.950	14.350								
	3,0 m	kg	*6.800	*6.800	13.550	10.250	17.050	13.100	*19.800	16.900	*23.450	22.050	*29.300	*29.300	*39.750	*39.750
	0,0 m	kg	*8.400	*8.400	12.850	9.600	15.950	12.050	20.100	15.300	25.900	19.800	34.800	26.450	*31.200	*31.200
	-3,0 m	kg	*11.500	10.150			15.500	11.600	19.300	14.600	24.850	18.800	33.600	25.300	*47.600	36.800
	-6,1 m	kg	18.600	14.100					19.750	15.000	25.200	19.150	*33.250	25.850	*42.350	37.850
Heavy Lift: OFF 	9,1 m	kg	*5.900	*5.900												
	6,1 m	kg	*6.050	*6.050	*11.050	10.950	*12.700	*12.700								
	3,0 m	kg	*6.800	*6.800	*13.350	10.250	*14.850	13.100	*17.050	16.900	*20.300	*20.300	*25.550	*25.550	*34.850	*34.850
	0,0 m	kg	*8.400	*8.400	12.850	9.600	15.950	12.050	*19.700	15.300	*24.000	19.800	*30.600	26.450	*31.200	*31.200
	-3,0 m	kg	*11.500	10.150			15.500	11.600	19.300	14.600	24.850	18.800	*31.900	25.300	*41.650	36.600
	-6,1 m	kg	*16.550	14.100					*18.050	15.000	*22.950	19.150	*28.850	25.850	*36.900	*36.900



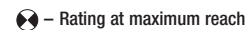
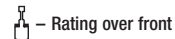
## PC1250SP-8

Boom: 7,8 m  
 Arm: 3,4 m  
 Bucket capacity: 6,7 m<sup>3</sup>  
 Bucket weight: 6.300 kg  
 Track shoes: 700 mm

**A** – Reach from swing centre

**B** – Bucket hook height

**C** – Lifting capacity



Arm length	B	A		12,2 m		10,7 m		9,1 m		7,6 m		6,1 m		4,6 m		
Heavy Lift: ON 	9,1 m	kg	*11.700	*11.700				*17.050	*17.050							
	6,1 m	kg	*12.250	*12.250			*16.300	16.100	*24.350	22.600	*28.750	*28.750	*36.350	*36.350		
	3,0 m	kg	*14.600	13.700			20.150	15.300	26.950	20.750	*33.850	27.000	*47.450	41.150		
	0,0 m	kg	19.300	14.550			19.400	14.600	25.600	19.450	31.750	23.500	*48.750	38.650		
	-3,0 m	kg	*23.900	19.550					*23.950	19.550	*30.750	24.850	*41.450	39.250	*52.450	*52.450
	-6,1 m	kg														
Heavy Lift: OFF 	9,1 m	kg	*11.700	*11.700				*17.050	*17.050							
	6,1 m	kg	*12.250	*12.250			*16.300	16.100	*21.150	*21.150	*25.150	*25.150	*32.100	*32.100		
	3,0 m	kg	*14.600	13.700			20.150	15.300	*24.450	20.750	*29.450	27.000	*41.750	41.150		
	0,0 m	kg	19.300	14.550			19.400	14.600	25.600	19.450	*29.900	23.500	*42.750	38.650		
	-3,0 m	kg	*20.500	19.550					*20.550	19.550	*26.450	24.850	*36.100	*36.100	*45.800	*45.800
	-6,1 m	kg														

\* Load is limited by hydraulic capacity rather than tipping.  
 Ratings are based on SAE Standard No. J10567.  
 Rated loads do not exceed 87% of hydraulic lift capacity or 75% of tipping load.

# HYDRAULIC EXCAVATOR

## STANDARD EQUIPMENT

- Komatsu SAA6D170E-5, 515 kW turbocharged common rail direct injection diesel engine, EU Stage IIIA compliant
- Double element type air cleaner with dust indicator and auto-dust evacuator
- Cooling fan: remote hydraulically driven variable speed, reversible
- Radiator & oil cooler with fly net
- Automatic fuel line de-aeration
- Alternator 24 V/60 A
- Batteries 2 × 12 V/220 Ah
- 2 × starter motor 24 V/11 kW
- Electronic Open-centre load sensing (E-OLSS) hydraulic system
- Auto-deceleration function
- Multi-function colour monitor with equipment management monitoring system (EMMS)
- Working mode selection system (power mode, economy mode)
- Heavy lift mode
- 2 mode boom control
- Shockless boom control
- Adjustable PPC wrist control levers with 3 button controls for arm, boom, bucket and swing
- PPC control levers and pedals for steering and travel
- In-line filter for hydraulics
- Hydrostatic, 2-speed travel system with automatic shift and planetary triple reduction final drives, and hydraulic travel and oil disc parking brakes
- Highly pressurised and tightly sealed viscous mounted cab with tinted safety glass windows, front window wiper with intermittent feature, floor mat, cigarette lighter and ashtray, bottle holder & magazine rack
- Automatic climate control system
- Fully adjustable suspension seat with retractable seat belt
- Rearview mirrors, left and right
- Step light with timer
- Working lights, 2 boom, 2 cab roof front, 1 cab bottom
- Automatic swing holding brake
- Corrosion resistor
- Counterweight 18.000 kg
- Track guiding guard (each side)
- Track frame undercover (centre)
- Travel motor guards
- Revolving frame under cover (heavy-duty)
- Machine cab handrails and catwalk
- Horn, air
- Lockable fuel cap and covers
- Audible travel alarm
- One-touch engine oil drainage
- PM service connectors
- Parts book and operator manual
- Standard colour scheme and decals
- Toolkit and spare parts for first service
- 700 mm wide double grouser shoes
- Vehicle Health Monitoring System (VHMS)

## OPTIONAL EQUIPMENT

- Arms (Backhoe):**
  - 3.400 mm arm assembly
  - 3.400 mm HD arm assembly
  - 3.400 mm SP arm assembly
  - 4.500 mm arm assembly
  - 4.500 mm HD arm assembly
  - 5.700 mm arm assembly
- Arms (Loading shovel):**
  - 3.800 mm arm assembly
- Booms (Backhoe):**
  - 7.800 mm SP boom assembly
  - 9.100 mm boom assembly
- Booms (Loading shovel):**
  - 5.300 mm boom assembly
- Alternator 90 A/24 V
- Automatic greasing system (Lincoln 18 ltr)
- Cab with pull-up type front window
- Grease gun, air pump
- Interconnected horn and flashing light
- Radio
- 1.000 mm wide double grouser shoes
- Full length track roller guards
- Satellite communication system for VHMS



**Komatsu Europe International NV**

Mechelsesteenweg 586  
 B-1800 VILVOORDE (BELGIUM)  
 Tel. +32-2-255 24 11  
 Fax +32-2-252 19 81  
[www.komatsueurope.com](http://www.komatsueurope.com)