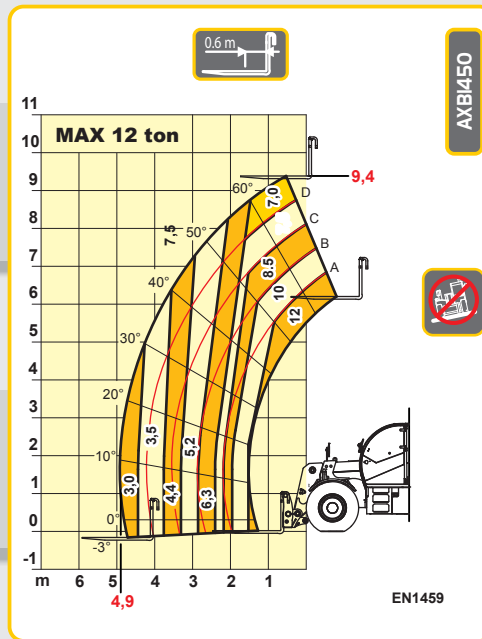


macchine edili ed agricole
d DIECI

Hercules 120.10



Hercules 120.10



PERFORMANCES

Maximum capacity:..... 12,000 kg
 Capacity at maximum height on tyres:..... 7,000 kg
 Capacity at maximum boom extension on tyres:..... 3,000 kg
 Maximum lifting height on tyres:..... 9.40 m
 Maximum horizontal boom extension:..... 4.90 m
 Boom extension at maximum height:..... 0.60 m
 Fork tilting angle:..... 120°
 Tearing force:..... 11,400 daN
 Maximum allowable slope with load:..... 39 %
 Total empty weight:..... 16,700 kg
 Max speed:..... 28 km/h



TRANSMISSION

Transmission:..... hydrostatic with variable delivery pump
 Hydraulic engine:..... with automatic adjustment
 Reversing gear:..... electro - hydraulic
 Inching pedal for controlled forward movement.
 Servocontrolled 2-speed gear box.



HYDRAULIC SYSTEM

Gear Pump:..... 53 l/1' / 200 bar
 Variable delivery pump (Load Sensing):..... 160 l/1' / 280 bar
 Control valve with joystick:..... 4 in 1
 Simultaneous movements:..... 4
 Proportional control distributor "Load Sensing" with "Flow Sharing"



DIFFERENTIAL AXLES (HEAVY DUTY)

Steering axles:..... 2, with planetary reduction gears
 Type of steering:..... 4 wheels / transversal / 2 wheels
 Front axle:..... rigid
 Rear axle:..... oscillating
 Service brake:..... oil bath on the 4 wheels
 Negative parking brake.



ENGINE

PERKINS 1104D-ETA - 106 kW
 Maximum power:..... 106 kW (144 hp) at 2,200 rpm
 Type:..... four-stroke, diesel engine, Common-Rail
 Cylinders number and layout:..... 4, vertical in line
 Displacement:..... 4,399 cm³ -Turbo compressor aftercooler
 Cooling system:..... liquid
 Specific fuel consumption (2,200 rpm):..... 230g/kWh
 Electronic accelerator.
 Manual accelerator.
 Air pre-heater for cold climates.



REFUELLING (litre)

Oil tank:..... 300
 Fuel tank:..... 270



STANDARD DEVICES

Anti-tipping device with block for hazardous movements.
 Hydraulic socket for possible accessories on boom head.
 ROPS - FOPS approved closed soundproof cab, with heating.
 Self-locking differential on front axle (limited slip 45%).
 High efficiency cyclone self-cleaning air filter.



TYRES

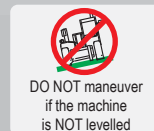
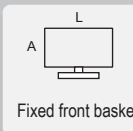
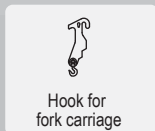
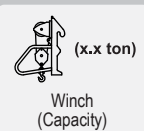
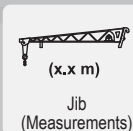
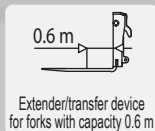
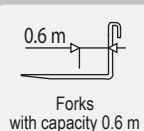
Tyres:..... 17.5 R25
 Alternative:..... 16.00 R25



OPTIONAL AND ACCESSORIES

A/C; Webasto heater; digital speedometer; water heater;
 pneumatic seat suspension; light on boom head; quick
 attachment for accessories; radio; anti-theft alarm; glass
 protection; Reversible fan; Wheel self-alignment.
 (For further customised accessories, please consult your local dealer)

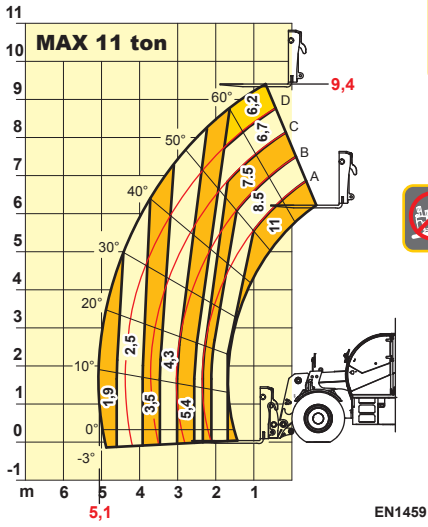
SYMBOLS KEY



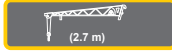
Equipment



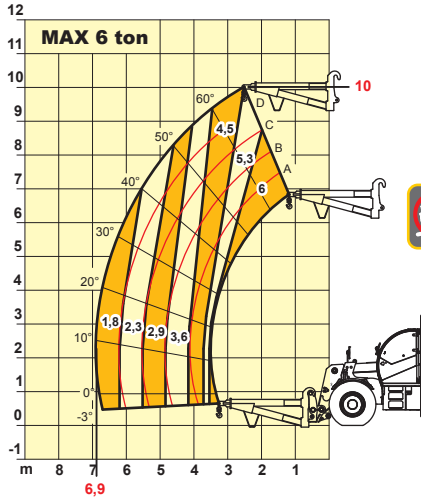
AXBI450/106A



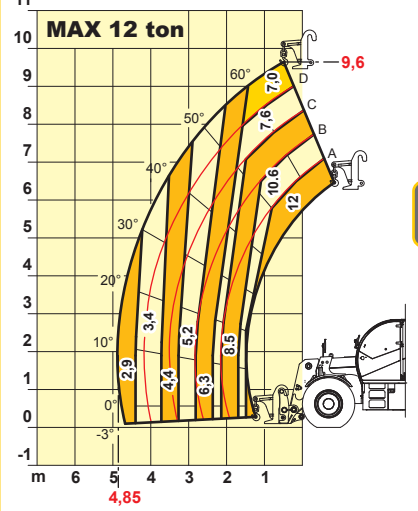
EN1459



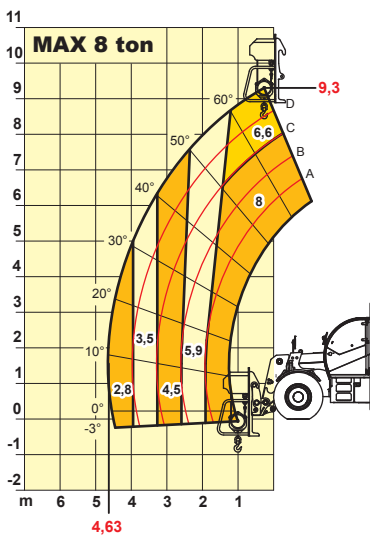
AXBI450/102A



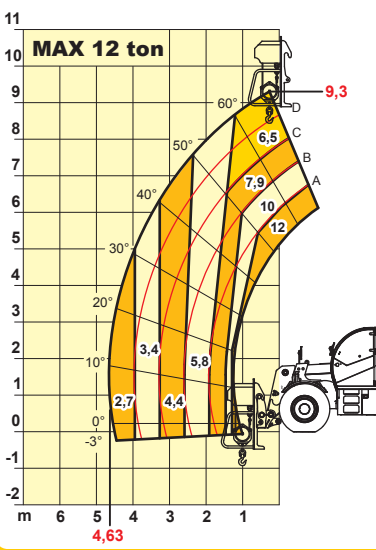
AXBI450/9A



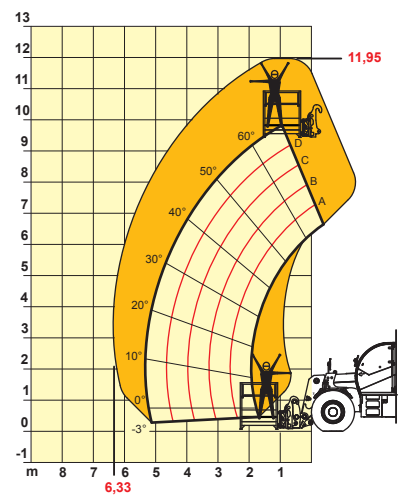
AXBI450/104A



AXBI450/103A



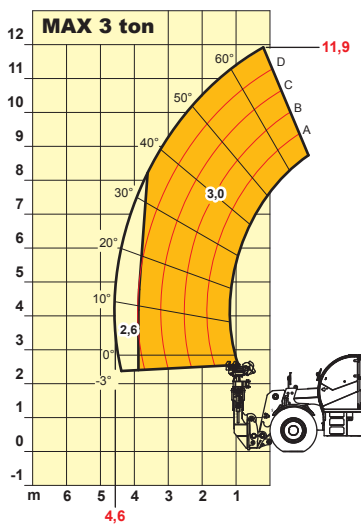
AXBI450/101A



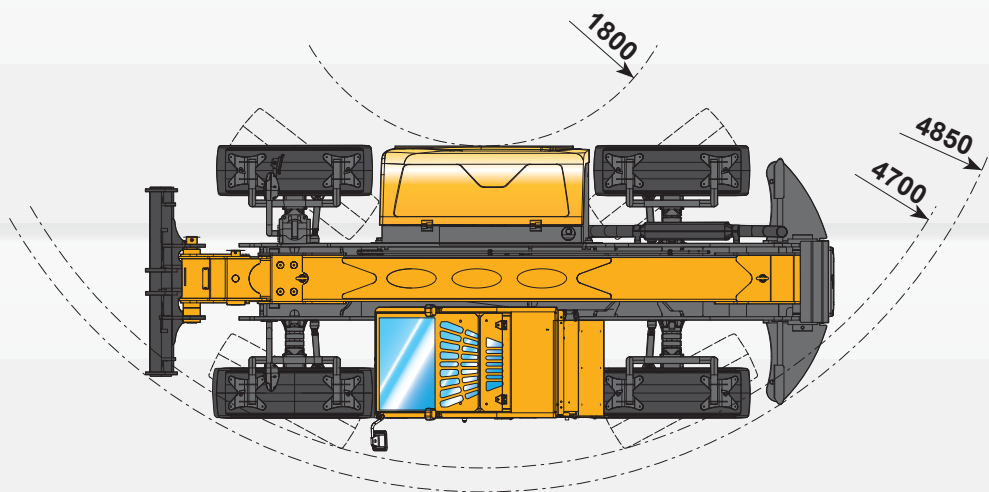
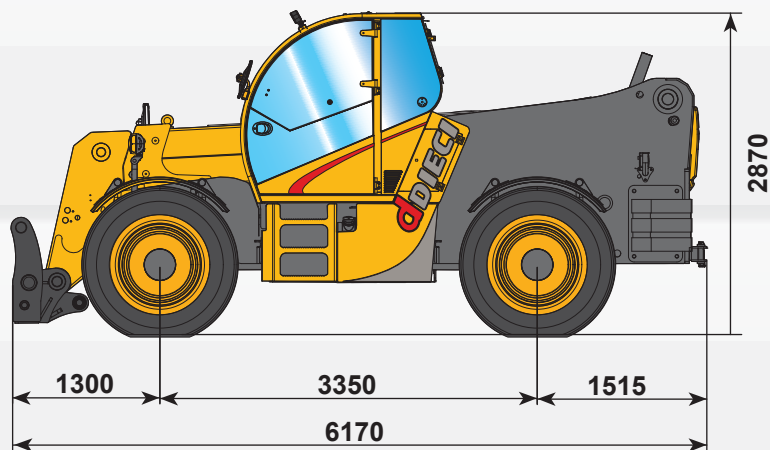
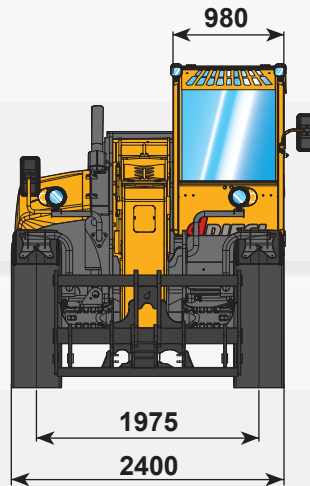
Max. $\frac{1000}{100} = 10000$ kg



AXBI450/24A



Hercules 120.10



I dati contenuti in questo stampato sono forniti a titolo indicativo; i modelli descritti sono suscettibili di modifiche, senza preavviso, da parte del costruttore, disegni e fotografie possono riferirsi a equipaggiamenti opzionali o ad allestimenti destinati ad altri paesi. Per ogni altra informazione, rivolgersi alla sede DIECI all'indirizzo a fondo scheda.

The information contained in the present publication is only intended as an indication; the models described may be modified, without notice, by the manufacturer, drawings and photographs may refer to optional equipment or to particular specifications for other countries. For any further information, please contact DIECI headquarters at the address given below.